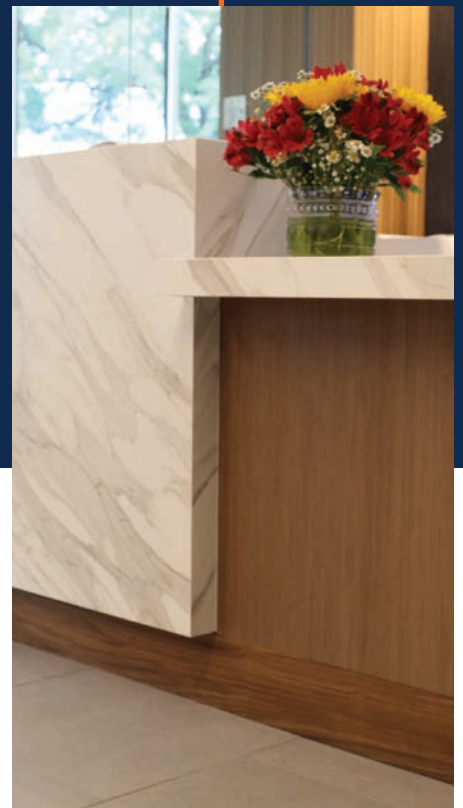


# PRODUCT CATALOG



**SAFEWOOD**  
DESIGNS







## OUR MISSION

SafeWood Designs, Inc. has a clear mission and that is to enhance the safety and security in all places you live, learn, work, worship, and play.

## ABOUT US

SafeWood Designs, Inc. is a manufacturer of bullet-resistant products and materials such as glazing, doors, windows, walls, furniture, shields, and more.

We established SafeWood Designs, Inc. because our changing world means that safety and security needs are increasing. Gun violence is a very real threat to our schools, homes, places of worship, offices, and businesses.

Our experience and craftsmanship allow us to provide extraordinary protection at key thresholds without compromising the current structure or interior decor.

We create beautifully crafted, USA-made products with modern patented protections to maintain warm and inviting spaces.

# UL752 BALLISTICS CHART

Understanding your perceived threat is step one in understanding what level of protection you require. Are you concerned with handgun threats or rifle threats? The UL752 Ballistics Chart illustrates the appropriate level of protection for each type of weapon or ammunition threat. The most sought-after protection levels are UL752 Level 3 and Level 8.

Bullet Resistant UL752	BR Level	Weapon	Ammunition	Shots	Velocity
	1	9mm Full Metal Copper Jacket with Lead Core	124 GR FMJ	Single	1175-1295
	2	.357 Magnum Jacketed Lead Soft Point	158 GR SP	Single	1250-1375
	3	.44 Magnum Lead Semi-wadcutter Gas Checked	240 GR Lead	Single	1350-1485
	4	.30 caliber Rifle Lead Core Soft Point (.30-06 Caliber)	180 GR SP	Single	2540-2794
	5	7.62mm Rifle Lead Core Full Metal Copper Jacket Military Ball (.308 Caliber)	150 GR FMJ	Single	2750-3025
	6	9mm Uzi Full Metal Copper Jacket with Lead Core	124 GR FMJ	Multiple	1400-1540
	7	5.56mm M-16 Rifle Full Metal Jacket w/ Lead Core (.223 Caliber)	55 GR FMJ	Multiple	3080-3388
	8	7.62 Rifle Lead Core Full Metal Copper Jacket Military Ball (.308 Caliber)	150 GR FMJ	Multiple	2750-3025

## THRESHOLDS OF DEFENSE: KEY THRESHOLDS TO PROTECT

### Primary Threshold

#### Exterior

Secure the primary entrance with bullet resistant materials, such as our patented wood storefronts.

### Secondary Threshold

#### Interior

Enhanced security such as bullet resistant check-in desks, windows, walls, doors, etc.

### Tertiary Threshold

#### Secured Interior

A complete safe zone for multiple people such as an interior room.



# WALL PANELS

SafeWood Designs' fiberglass UL 752 bullet-resistant wall panels allow for every building or home to have a safe area. This cost-effective, non-intrusive system can be used to create a safe haven in your home, office, school, etc. for everything from an invasion, and storage of valuables, to natural disasters.

## UL752 LEVEL 1

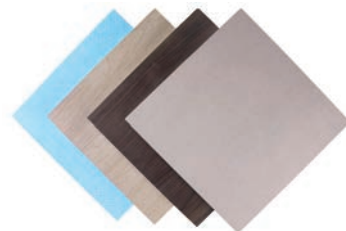
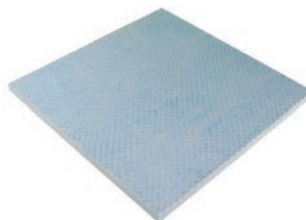
Thickness: 1/4"  
Weight: 2.6 lbs sq/ft  
Size: 4' x 8'

*\*Other sizes available on request*

## UL752 LEVEL 2

Thickness: 5/16"  
Weight: 3.6 lbs sq/ft  
Size: 4' x 8'

*\*Other sizes available on request*



## UL752 LEVEL 3

Thickness: 7/16"  
Weight: 4.8 lbs sq/ft  
Size: 4' x 8'

*\*Other sizes available on request*

POPULAR

## UL752 LEVEL 4

Thickness: 1-3/8"  
Weight: 13.9 lbs sq/ft  
Size: 4' x 8'

*\*Other sizes available on request*

## UL752 LEVEL 5

Thickness: 1-7/16"  
Weight: 14.8 lbs sq/ft  
Size: 4' x 8'

*\*Other sizes available on request*

## UL752 LEVEL 6

Thickness: 3/8"  
Weight: 3.9 lbs sq/ft  
Size: 4' x 8'

*\*Other sizes available on request*

## UL752 LEVEL 7

Thickness: 1-1/8"  
Weight: 11.7 lbs sq/ft  
Size: 4' x 8'

*\*Other sizes available on request*

## UL752 LEVEL 8

Thickness: 1-7/16"  
Weight: 15.2 lbs sq/ft  
Size: 4' x 8'

*\*Other sizes available on request*

POPULAR

# RETROFIT

Easily transform your existing furniture and walls with ballistic protection. When seconds matter, the addition of our decorative or concealed bullet resistant paneling offer an immediate layer of protection for you, your employees, and your clients without compromising your interior décor.



PLASTIC LAMINATED

APPLIED VENEER

APPLIED PAINTABLE MDF

UL752 Level 3 or 8 Ballistics  
Thickness: 5/8" to 1-5/8"  
Weight: 5.65 to 16.65 lbs sq/ft  
Size: Cut to size

# BALLISTIC DOORS

SafeWood Designs' wood bullet-resistant doors and patented wood frame assemblies are designed to prevent forced entry, protect against threats of invasion, and are intended to capture and retain attacking projectiles which markedly lessens the risk of ricochet and deters possible lateral damage.

## FLUSH

SafeWood Designs' flush doors are fabricated with veneer or plastic laminate without panels or distinctive details.

## FLAT PANEL

Available in many different configurations, our flat panel doors pays tribute to minimalist and shaker style design.

## RAISED PANEL

SafeWood Designs' raised panels doors feature distinct edge profiling for traditional and classic design preferences.

## LUXURY DESIGN

Our custom capabilities enable us to fabricate doors with intricate and delicate details.

## VISION

Perfect for commercial, healthcare, government or industrial use, our narrow-vision, half-vision, or full-vision ballistic doors allows both visibility and protection.

## CUSTOM

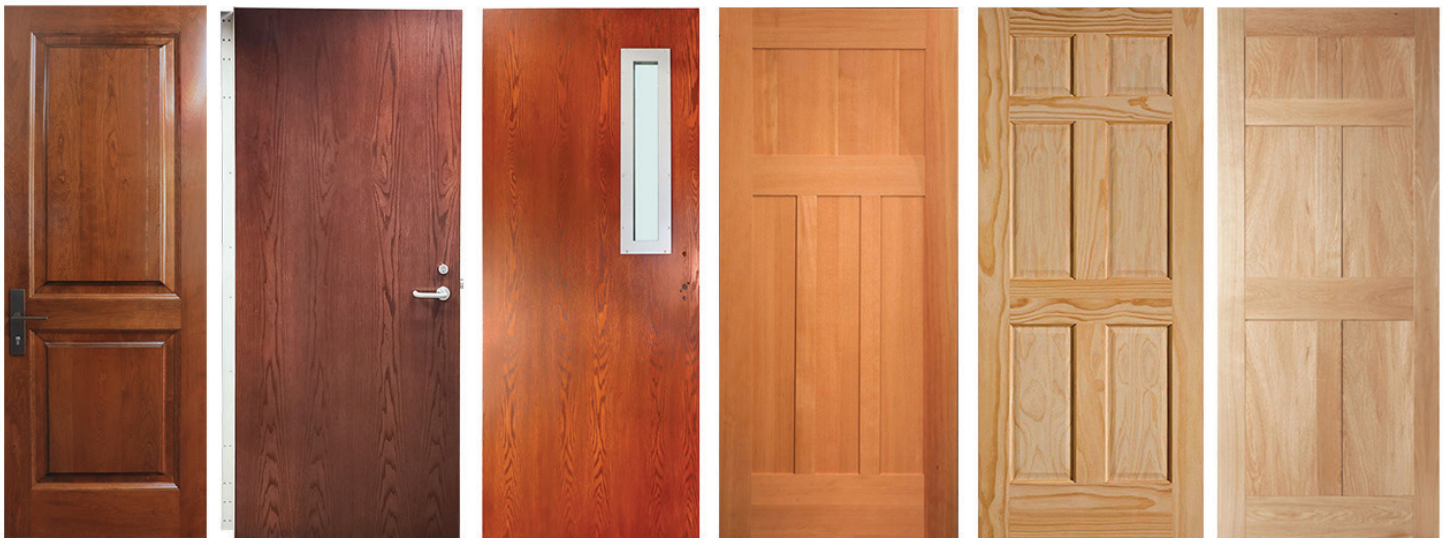
SafeWood Designs' engineers are always ready for a challenge. Bring your unique door idea to us and our team will work together to find the best solution.

## HISTORIC REPLICATION

Our historic replication process maintains the historical integrity of any building while simultaneously enhancing safety and security.

## BARN DOORS

With sliding hardware in either black or silver, we can create a custom ballistic sliding door that suites your individual design preferences.



ANY WOOD SPECIES. ANY DESIGN. ANY FINISH.

## HARDWARE

In addition to compatibility with any traditional door hardware, SafeWood also offers security upgrade options such as mag-locks and multi-point locking systems to fit your safety and security requirements.

## FRAMES

SafeWood Designs' patented wood-framing system offers protection in Level 3 or Level 8 in any wood species for a complete ballistic entry package. We also offer metal frames as well.



# BALLISTIC GLAZING

Bullet resistant glazing by SafeWood Designs keeps your building functioning, controlled, safe and secure while allowing natural light to fill your protected space. Our glazing options are available in UL752 Levels 1-8. For more information and technical details, see our glass catalog.



## TYPES OF GLASS

### TRADITIONAL LAMINATED

The first bullet resistant glass created and now the least recommended product. These products have longer production schedules and tend to be quite thick, heavy, and difficult to work with for advanced applications.

### INSULATED BALLISTIC

This option boasts energy efficiency with its assault and bullet resistance capabilities, great light transmission, and can be utilized indoor or outdoor.

### ACRYLIC

Typically the least expensive option, Acrylic bullet resistant glass offers great light transmission with options of wonderfully polished edges. This is recommended for indoor use as acrylic tends to haze easily.

### POLYCARBONATE

Polycarbonate is a soft material and captures bullets as compared to the more brittle acrylic. It also has less light transmission at around 80%. This material does reach higher UL levels in smaller thicknesses. This material is also recommended for indoor use to avoid crazing and hazing.

### GLASS-CLAD

These hybrids are sandwiched with panes of glass, polyurethane, and either polycarbonate or acrylic layered within. This is a high performance material with indoor and outdoor applications and has UL levels 1-10. Although more expensive, this material weathers well.

WOOD WINDOWS

ALUMINUM WINDOWS

TRANSACTION WINDOWS

TRANSOMS/ SIDELIGHTS

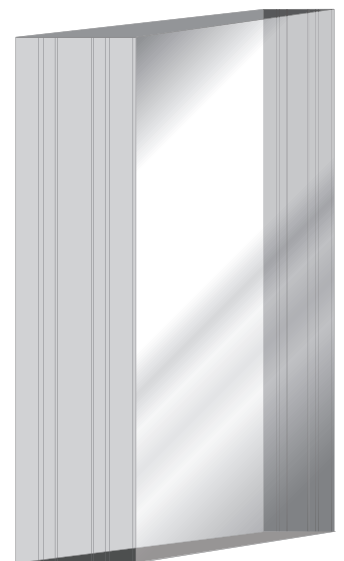
STOREFRONT SYSTEMS

MOBILE SAFE SHIELD™

SAFESHUTTER™

VISION DOORS

CUSTOM GLASS PROJECTS



UL Level 3 Glazing: SWD003



# TRANSACTION WINDOWS

SafeWood Designs' transaction windows offer reliable ballistic protection with personable face-to-face interactions making our windows perfect for providing employees the confidence to safely serve customers. Our custom capabilities include a wide range of materials from glazing and counter options to style and framing options.



## NATURAL VOICE

Unobstructed vision with natural voice transmission around the glazing through the frame for increased protection.



## CLEAR DISC SPEAK THROUGH

Ballistic Disc overlap prevents projectile entry and allows for natural voice transmission through the disc and offers minimally obstructed vision.



## STAINLESS STEEL SPEAK THROUGH

Ballistic level 3 rated, heavy-duty stainless steel speak through enables protection and more clear sound transmission. Amplified hardware available.



## VERTICAL SLIDER

This transaction window features a removable, easy-to-clean, vertical sliding glass opening for easy transactions with customers.



## SLIDING

Easy sliding glass openings for easy and more personable transactions with customers.



## PHARMACY

Bullet resistant package drawer window with optional:

- Night time drop slot
- Call button and speakers
- Full intercom system
- Electric drawer



## BAFFLE

Staggered bullet resistant glass with secure airways for natural voice transmission and enhanced protection.



## HALF-BAFFLE

Staggered bullet resistant glass with secure airways for natural voice transmission and enhanced protection with a more modern look.

## COUNTER OPTIONS

- Stainless Steel
- Stainless Steel w/ Integrated Deal Tray
- Solid Surface
- Plastic Laminate
- Bullet-Resistant

## DEAL TRAY OPTIONS

- Stainless Steel
- Non-ricochet
- Bullet Resistant

## UL752 LEVEL OPTIONS

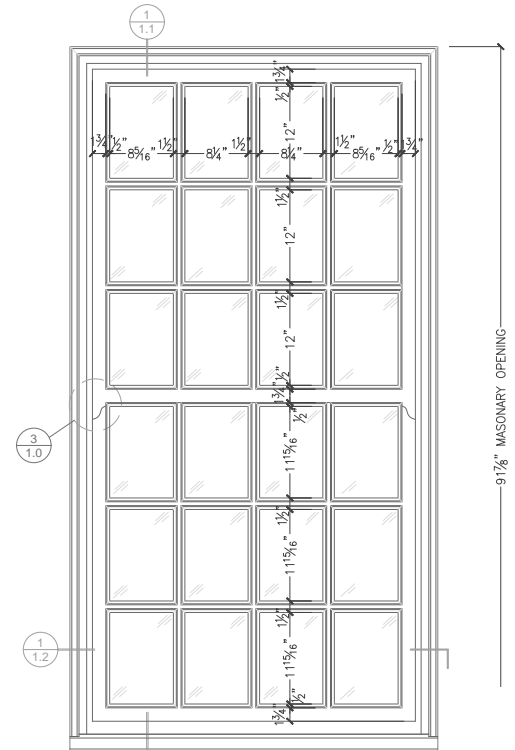
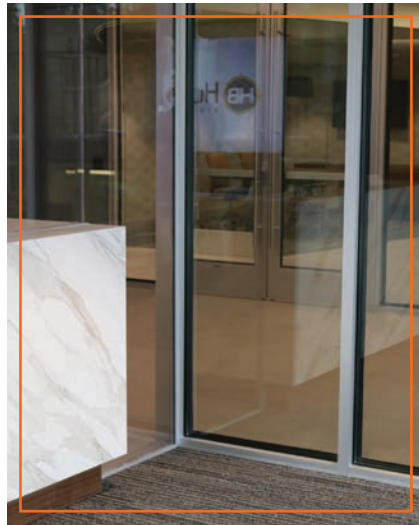
- 6063 Aluminum Frame
- Wood Frame
- Frame Ballistic Levels 1-8
- Glazing Ballistic Levels 1-8

## SIZE

- Built to Specifications
- Custom

# BALLISTIC WINDOWS

Bullet resistant windows by SafeWood Designs keeps your building functioning, controlled, safe and secure while allowing natural light to fill your protected space with designs to match your interior décor.



## BALLISTIC WINDOW FEATURES

- Full view from secure areas
- Patented wood frames and jambs
- Sidelights & Transoms
- Bullet Resistant Level 8 Frame
- Bullet Resistant Glass UL Level 1-8
- Modern to Historical
- Wood or Aluminum

## SECURITY GLASS VS. FILM

The easiest way to distinguish security glass from security film is that security glass will stop bullets and security film will not. Security film is designed for force entry and meant to slow the progress of an assailant. It is a great solution for those on a budget without a perceived gun threat but it will not offer protection from bullets.

## WHY USE BULLET RESISTANT GLASS?

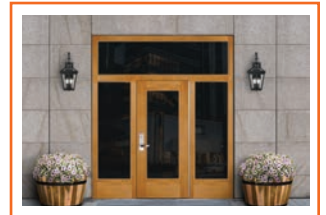
Bullet Resistant Glass provides protection against armed attacks, terrorists, robbers, hit men and criminals in general. From handguns to rifles, we can produce the required composition to insure maximum security.





# STOREFRONT ASSEMBLIES

Maximum security that is virtually undetectable. Our patented, bullet resistant, storefront system has the ability to make any interior entrance more secure and safe. Perfect for vestibules, malls, and office spaces, our storefront system has the warm and inviting feel of wood with the security of bullet resistance. Our doors can accommodate any locking hardware including low voltage systems and magnetic systems all made to your exacting specifications.



## TECHNICALS

Interior Applications  
UL752 Ballistic Levels 1-8  
Custom Dimensions  
Compatible with any locking system  
Low Voltage Available  
Historical Replication  
Veneer, Plastic Laminated, or Aluminum

# HISTORIC REPLICATION

SafeWood's team has extensive experience designing, engineering, and manufacturing bullet resistant woodwork and millwork, as well as the replication, reuse, and modification of historic doors, wall paneling, windows, and furniture to incorporate bullet resistant materials.



## HISTORIC CAPABILITIES

- Historic replication
- Re-use of historic materials
- Modification of existing historic materials
- Reuse of historic hardware and components
- Finish matching, and refinishing when needed
- Wood profile or moulding matching
- Conversion of existing glass to bullet resistant glass

# SAFE SHUTTER™

SafeWood Designs' SafeShutter™ is a bullet resistant whiteboard that obstructs an attacker's line of sight. This shield can be swung 180° to impede an attackers progress. In the event of an emergency it can also be used as a defensive position. The SafeShutter™ provides bullet resistant safety over any windows or doors.



## TECHNICALS

Ballistic Levels 1-8  
Thickness: Starting at 1-1/2"  
Weight: 5.65 to 16.65 lbs sq/ft  
Size: Custom or Standard  
42" x 84" or 72"; 36" x 84" or 72"



Glass Options

BALLISTIC GLAZING

WHITE BOARD

PLASTIC LAMINATE

WOOD VENEER

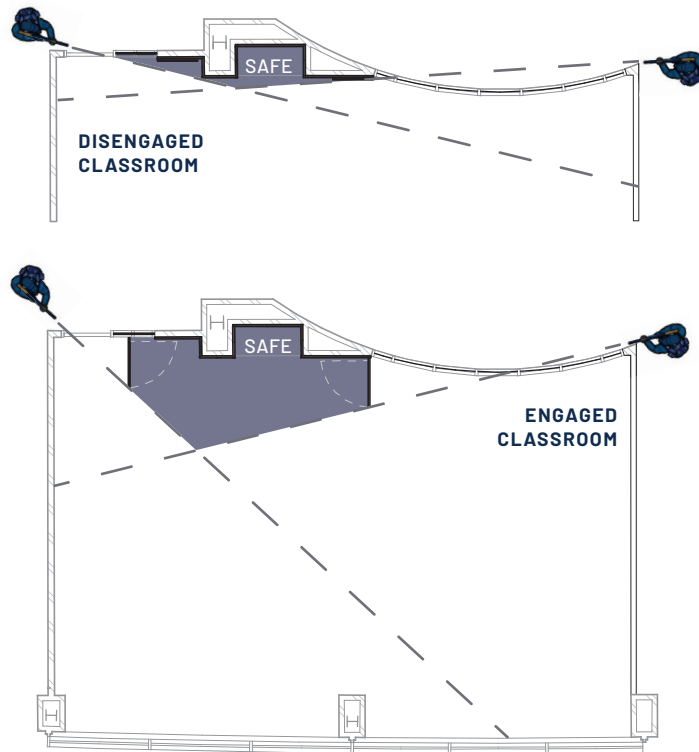
TACK BOARD

## SECURITY GLASS VS. FILM

The easiest way to distinguish security glass from security film is that security glass will stop bullets and security film will not. Security film is designed for force entry and meant to slow the progress of an assailant. It is a great solution for those on a budget without a perceived gun threat but it will not offer protection from bullets.

# SAFE SLIDEOUT™

The SafeSlideout™ by SafeWood Designs is meant to be an inconspicuous addition to your room cabinetry or decor. Used to effectively block the line of sight of an assailant, the SafeShutter works great to cover windows and doors. When paired with the SafeWood Designs' bullet resistant wall panel, the system provides a layer of protection in a wide array of settings.



## THE FATAL FUNNEL

The fatal funnel refers to the area within an opening such as a window or door that offers the most visibility and where most fatalities occur during an active shooter situation.

Adding the SafeShutter™ or SafeSlideout™ to any room (and pairing it with bullet resistant wall panels) increases the safety zone and decreases the fatal funnel as shown in the image to the left. Applications can include interior spaces in any industry.

## TECHNICALS

Ballistic Level 3-8

Weight: 6.5-18 lbs/square foot

Dimensions: (Custom Available)

24" x 72" x 4 3/4" - 5 1/7"; 36" x 72" x 4 3/4" - 5 1/7"; 48" x 72" x 4 3/4" - 5 1/7"





# MOBILE SAFE SHIELD

Mobile Safe Shield™ is a movable bullet resistant shield that acts as cover in the event of an active shooter. The ballistic Mobile Safe Shield™ can be rotated 360° to impede an attackers progress and also be used as a defensive position. This bullet resistant shield also provides ballistic safety over any windows or doors, simply move the shield in to the desired location for enhanced security.



## INSTANT PROTECTION

Our engineers at SafeWood Designs created our bullet resistant shield with a heavy duty steel frame, ballistic materials, convenient steel handlebar, and easy to maneuver 360 degree castor wheels. The Mobile Safe Shield is a quick and easy tool for defensive cover and positioning. Our ballistic shield design has many custom options to make it uniquely yours.

### TECHNICALS

UL752 Bullet-Resistant Levels 1-8  
Welded Steel Frame with Handlebar  
\*Custom Colors Available  
Materials: Plastic Laminate, Veneer, Whiteboard, Tack Board, Glass/Acrylic/ Polycarbonate  
Weight: Depends on UL Level  
Size: Custom or Standard  
72-1/2" x 48-1/13" x 23-13/16"



# SAFE ROOMS

For complete protection in the event of a prolonged assault, safe rooms are a great choice to add to any building. Safe rooms utilize multiple products for a complete system such as a bullet-resistant door paired with bullet-resistant wall panels for coverage designed to slow or stop an aggressor until authorities arrive.

RESIDENTIAL

COMMERCIAL

GOVERNMENT

RETAIL

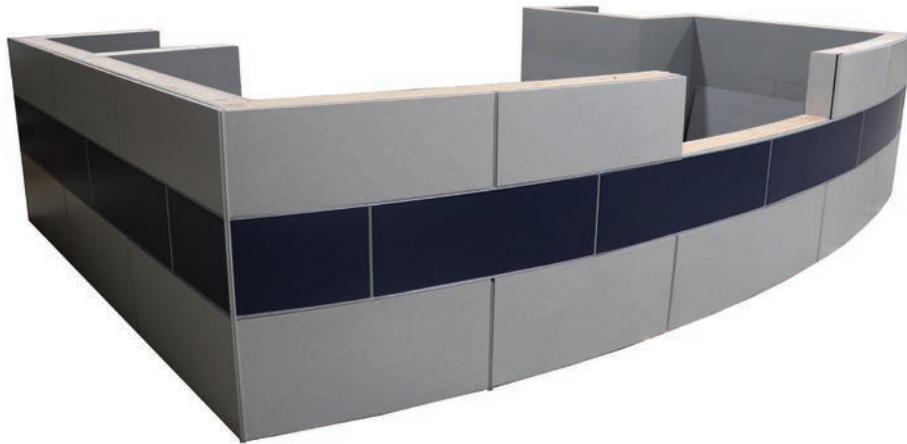
EDUCATION

HEALTHCARE



# SAFE FURNITURE

SafeWood Designs' has years of experience designing and manufacturing bullet-resistant furniture such as desks and conference tables. Bring your ideas, sketches or drawings and our engineers at SafeWood Designs will work with you to bring your custom furniture idea to life.



DESKS

DAIS

JUDGES' BENCH

PODIUMS

CONFERENCE TABLES

...AND MORE!



## ARCHITECT ADVANTAGE

### VIRTUAL LEARNING EVENTS

Schedule a learning event with our President, Jason Horner.

#### LEARNING OBJECTIVES

- Understand how the layers of defense interact and combine with Crime Prevention Through Environmental Design (CPTED)
- Understand the Thresholds/Zones for physical defense in your facility
- Understand the basics of what we know about shooter psychology
- Discover basic tactical analysis techniques
- Overview of SafeWood Designs products & implementation

### PLAN DRAFT SECURITY ANALYSIS

SafeWood Designs' physical security experts are specifically trained in tactical analysis techniques that identify any weak points in the current design with improvement recommendations.

### SPECIFICATIONS & DRAWINGS

Available online at [SafeWoodDesigns.com](http://SafeWoodDesigns.com).

### CONSULTATIONS

**safety + security. redesigned.**



**SAFEWOOD**  
D E S I G N S

7281 Commerce Cir W

Fridley, MN 55432

844-896-1800

[Sales@SafewoodDesigns.com](mailto:Sales@SafewoodDesigns.com)

