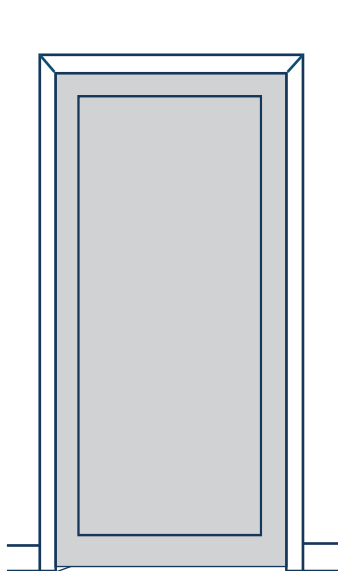
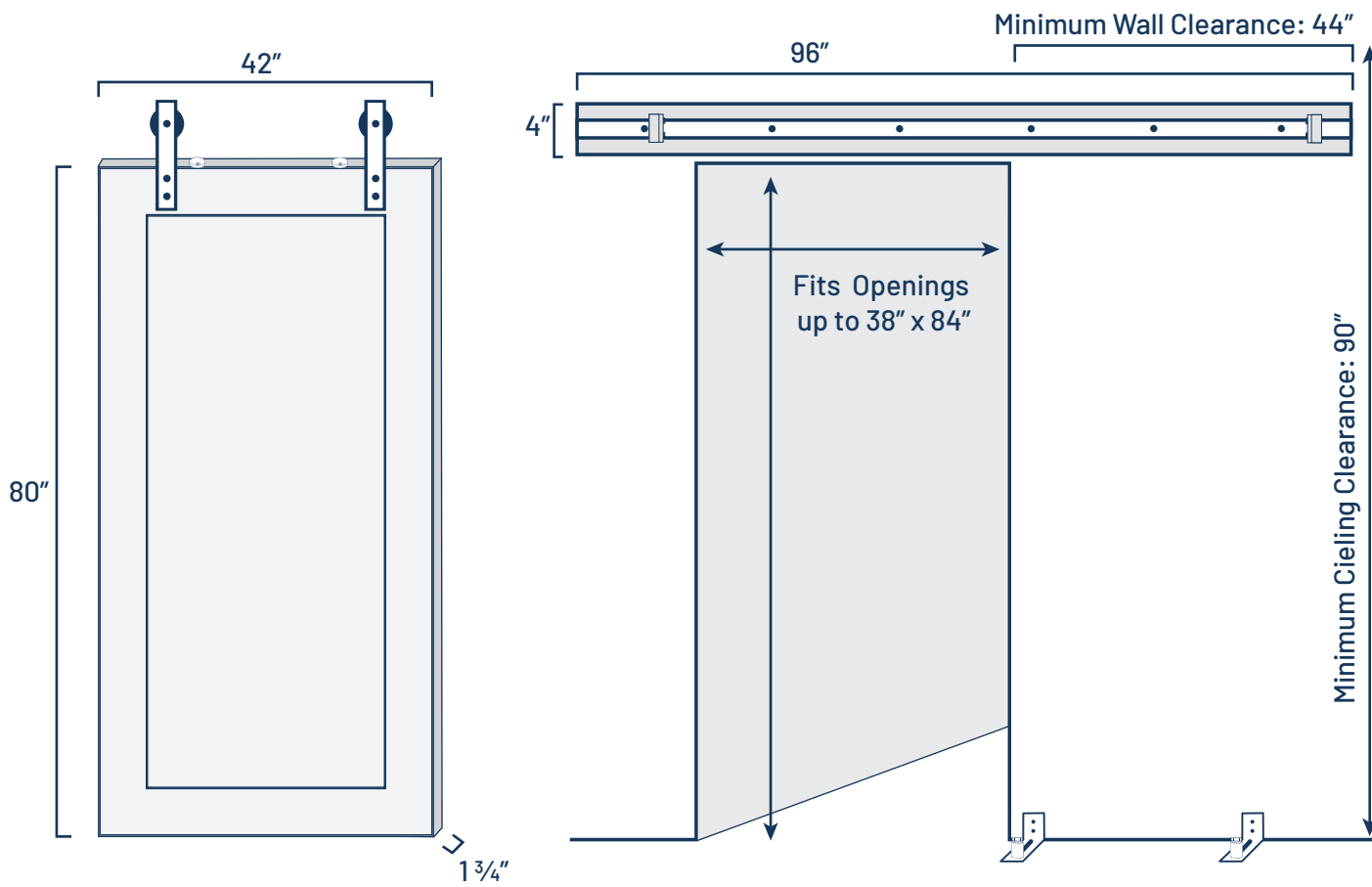


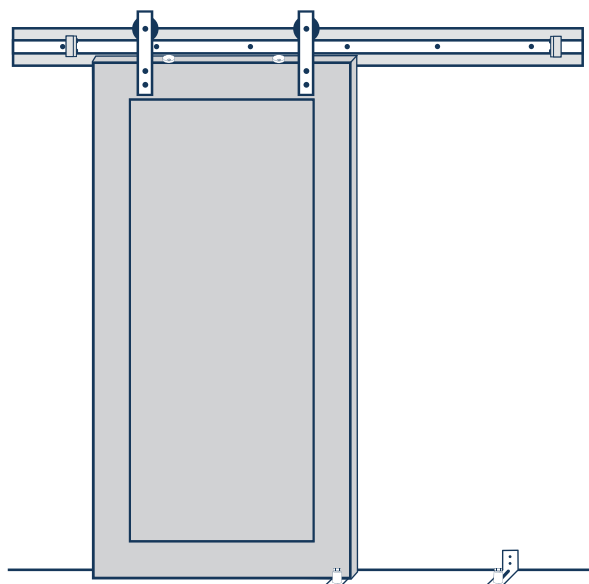


SAFEWOOD
DESIGNS

Bullet Resistant Barn Door INSTALLATION GUIDE



Attack Side

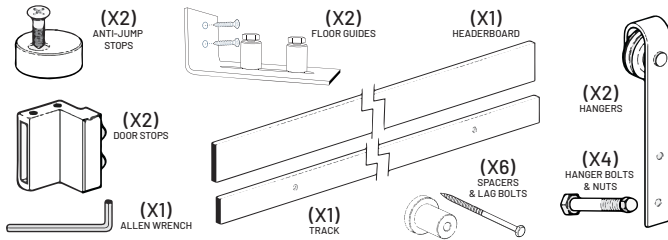


Safe Side



SAFewood
DESIGNS

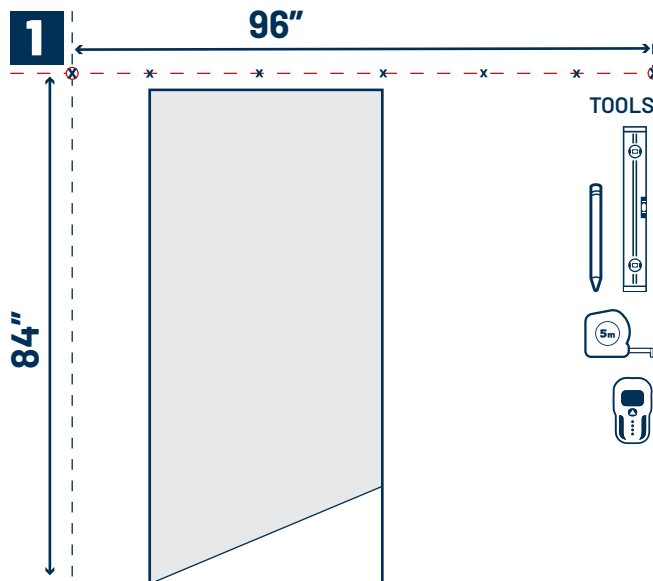
Bullet Resistant Barn Door INSTALLATION GUIDE



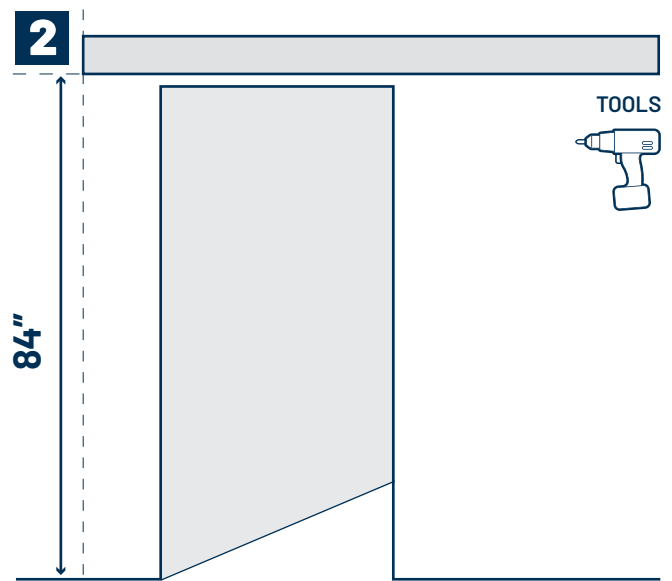
TOOLS/HARDWARE NEEDED

LEVEL
TAPE MEASURE
PENCIL
STUD FINDER
DRILL
#2 PHILLIPS SCREWDRIVER
HEADERBOARD MOUNTING HARDWARE
LOCK PLATE MOUNTING HARDWARE

5/8" DRILL BIT
13MM OR 1/2" SOCKET
13MM OR 1/2" WRENCH
16MM OR 5/8" SOCKET
17MM OR 11/16" SOCKET

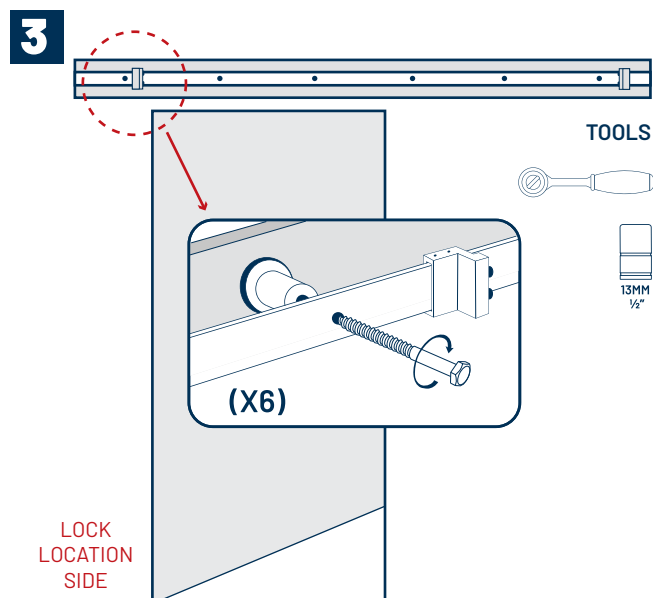


1. Measure and mark 84" up from floor.
2. Find and mark stud locations along line.
3. Using a level, mark an 8' line at 84".

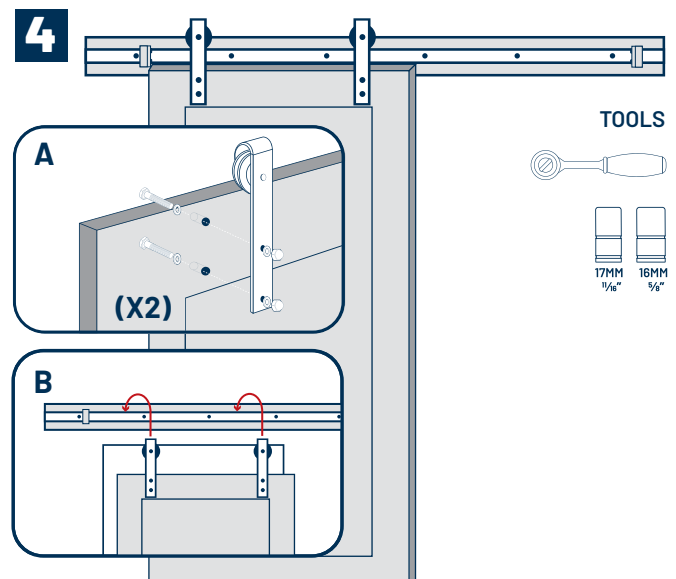


1. Align lower corner of headerboard with landing point and level line.
2. Securely mount your headerboard.

**Mounting hardware not included.*

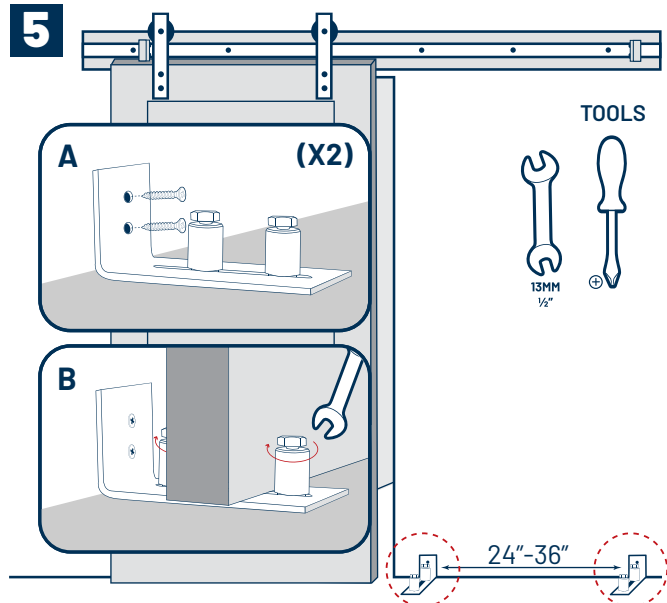


1. Slide the door stops onto the track. Do not fasten.
2. Install the track onto the header using the pre-drilled holes.
3. Identify the short side of the track for the locking mechanism.



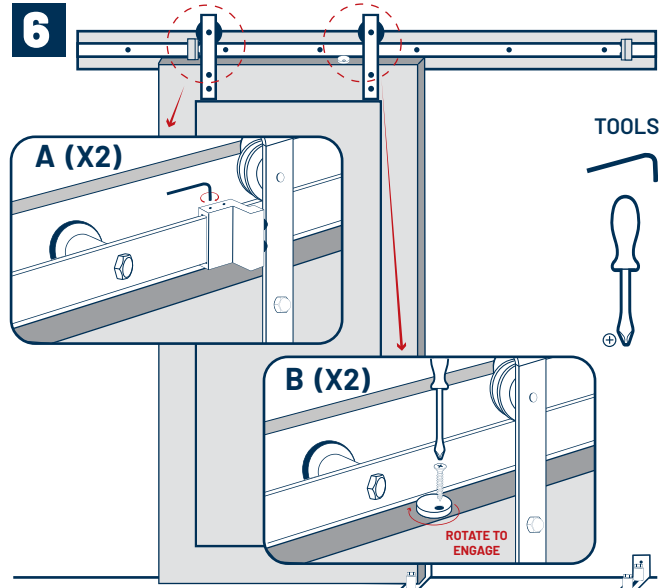
1. Mount hangers to door. Ensure the locking mechanism is facing the correct direction.
2. Lift door onto the track. Team lift strongly advised.

5



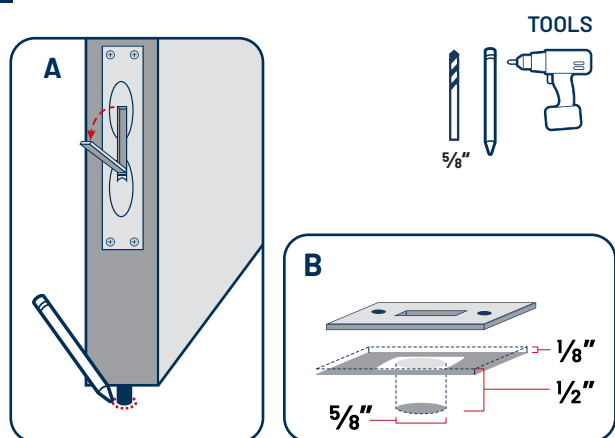
1. Mount floor guides to wall. (See A)
 - a. Install the first guide. Ensure the door remains in the first guide in both the open and closed door positions.
 - b. Install the second guide 24" - 36" from the first guide.
2. Adjust the floor guide rollers so they are flush to the door. (See B)

6



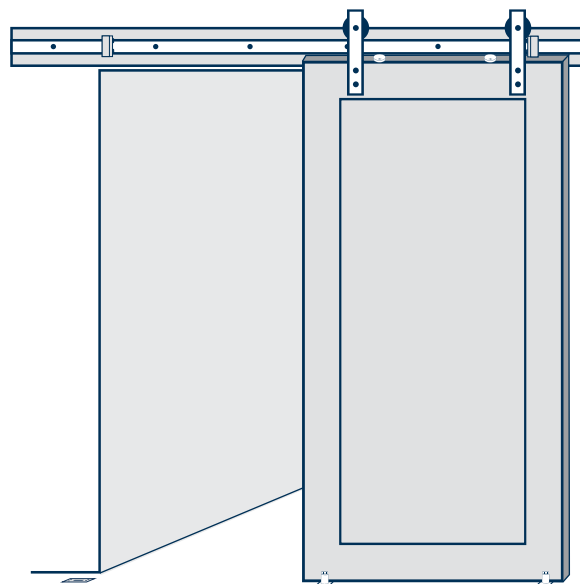
1. Close the barn door and ensure the door remains in the first floor guide. Slide the door stop against the hanger. Tighten. (See A)
2. Open the barn door ensuring the door is positioned within both floor guides. Slide the door stop against the hanger. Tighten. (See A)
3. Install anti-jump stops, spaced evenly apart. (See B)

7



1. Close the barn door and lower the locking mechanism latch. (See A)
2. Mark the floor bolt location. (See A)
3. Install the lock plate over the marked location. (See B)
4. Using a 5/8" drill bit, drill a 1/2" depth into the floor for the floor bolt. (1/8" mortise optional)

**Mounting hardware not included.*



Enjoy!



SAFWOOD
DESIGNS